

---

# Midwest Silhouette Show

---

*Craig Cronquist*

The Prairie State Bonsai Society presented its fifth annual Silhouette Show on February 22-23 at the Morton Arboretum in Lisle, IL.

The show included 32 trees and forests, primarily deciduous, in their leaf-free winter splendor, with a handful of coniferous trees displaying their internal structure in the spirit of a silhouette show. As usual, the society included trees in training so the viewers could understand the effort and interim steps needed to prepare a bonsai. The show also featured displays of many suiseki stones.

The society was pleased to be joined by vendors BC Bonsai, who sold bonsai trees, pots, and other accessories, and A Windowsill Paradise, who sold succulents.

The Society presented its first silhouette show in February, 2020 and has held its show each year since, skipping 2021 due to the pandemic.

This year's show was located in the Sycamore Room, the same venue used for the society's annual bonsai show in August as part of Morton Arboretum's Destination Asia Festival. In addition to their show, Prairie State Bonsai Society includes demonstrations for festival attendees and workshops at the Thornhill Education Center on the West side of the Arboretum. The Destination Asia Festival presents cultural events from many Asian cultures, including music (singing and instrumental), dance, and even sumo wrestling. That festival is scheduled for the August 2-3.



*Jim Beck's Elm on display at Morton Arboretum. Photo by Harry Wallner.*

Prairie State Bonsai Society is based in the Western suburbs of Chicago and meets monthly at the College of DuPage in Glen Ellyn, IL. The society has its roots in a bonsai group at Triton College, later incorporated in 1987 as Morton Arboretum Bonsai Society, and adopted its current name in 1994. Further information about the society is on its website at [prairiestatebonsai.com](http://prairiestatebonsai.com).

*Continued Next Page*



*Above left: Japanese Red Pine (*Pinus densiflora*) by Katlin Mulligan.*

*Above Right: Japanese Elm (*Ulmus parvifolia*) by Nick Dibattista.*

*Left: Korean Hornbeam (*Carpinus turczanovii*) by Phil Malhiot.*

*Photos by Harry Wallner.*

*Continued Next Page*



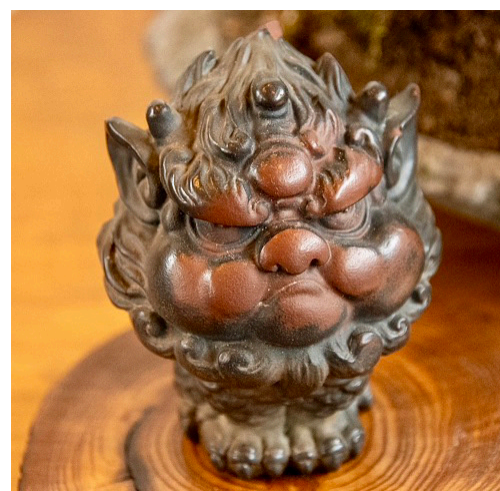
*Left: Japanese Maple (*Acer palmatum*) forest by Charlotte Field.*

*Below: Detail of forest companion.*

*Bottom left: Trident Maple (*Acer buegerianum*) by Matt Mazza.*

*Bottom right: Larch by Victor Zurczak.*

*Photos by Harry Wallner.*



*Continued Next Page*



*Above left: Dawn Redwood (*Metasequoia glyptostroboides*) forest by Bill Imlah.*

*Above right: American hornbeam (*Carpinus caroliniana*) by Phil Malhiot.*

*Left: Suiseki display by Craig Cronquist.*

*Photos by Harry Wallner.*

*Craig Cronquist is Prairie State Bonsai Society's Special Events Chair. Harry Wallner is the ABS Newsletter's Assistant Editor and can be reached at [hwallner@americanbonsaisociety.org](mailto:hwallner@americanbonsaisociety.org).*